



TK International  
020 7794 8700  
www.t-k.co.uk

Residential Sales  
Residential Lettings  
Property Management

Sales Office:  
9 Heath Street  
Hampstead  
London NW3 6TP  
E: sales@t-k.co.uk

Lettings Office:  
16-18 Heath Street  
Hampstead  
London NW3 6TE  
E: lettings@t-k.co.uk

tk.international  
TK International  
TK International

Est.  
1998



## **Penthouse Apartment Nutley Terrace Hampstead, NW3**

Situated within one of Hampstead's most prominent developments and forming part of a historic building which once housed those seeking refuge and shelter during the Second World War, is this beautifully converted three bedroom duplex penthouse apartment.

Boasting a beautiful contemporary interior design, the accommodation enjoys a wonderful 55'4 x 29' kitchen/living/dining area, three double bedrooms, three bathrooms (two en suite) and a study, together with two private terraces.

This wonderful development also provides a passenger lift, secure underground parking and a daytime porter/caretaker service.

Otto Schiff House is idyllically located on the corner of Nutley Terrace & Netherhall Gardens - a sought after residential area of Hampstead, which is conveniently situated for the amenities and transport links in Hampstead (Northern Line), Finchley Road & Swiss Cottage (Metropolitan & Jubilee Lines) and is also within the catchment of many of the popular schools.

Please note that CGI furniture has been included in some of the imagery.

**Guide Price: £3,000,000**

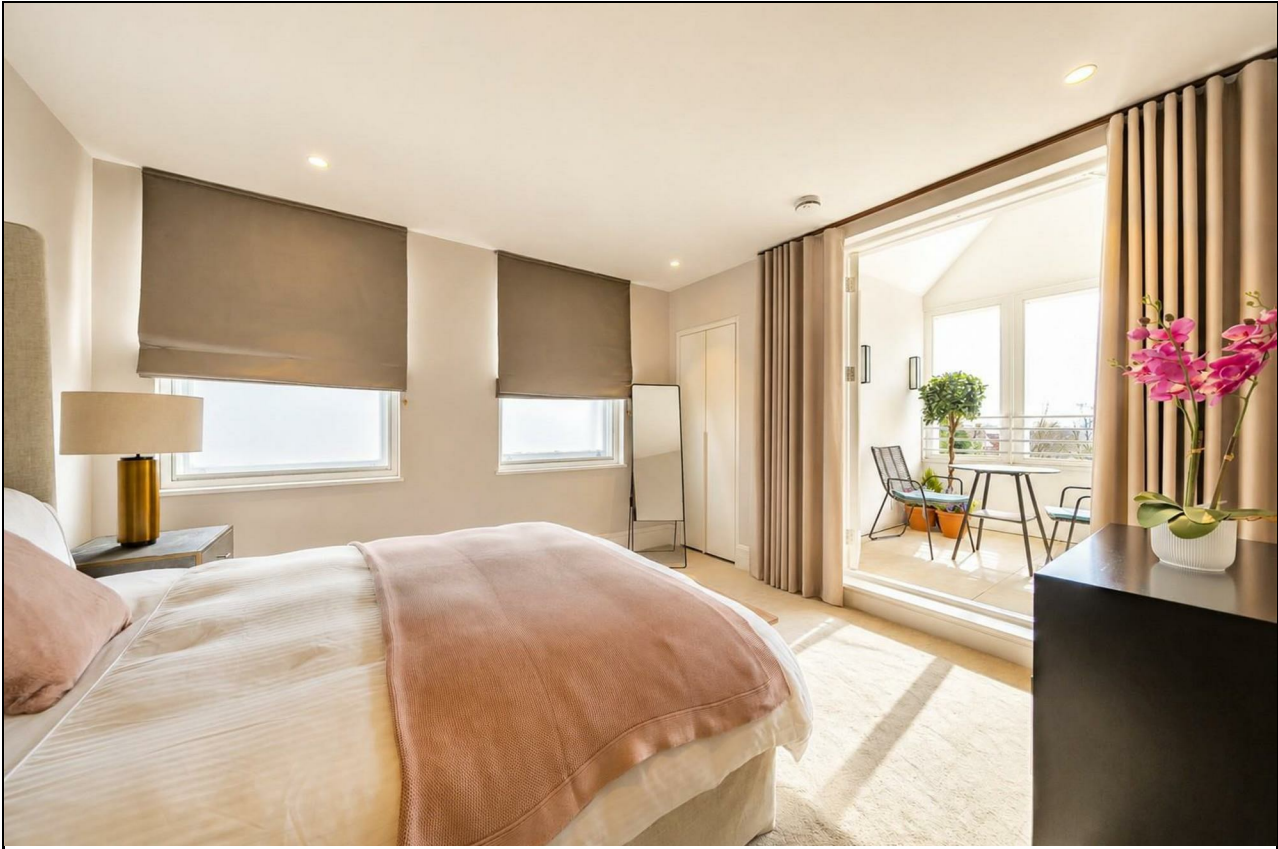
**Share of Freehold**













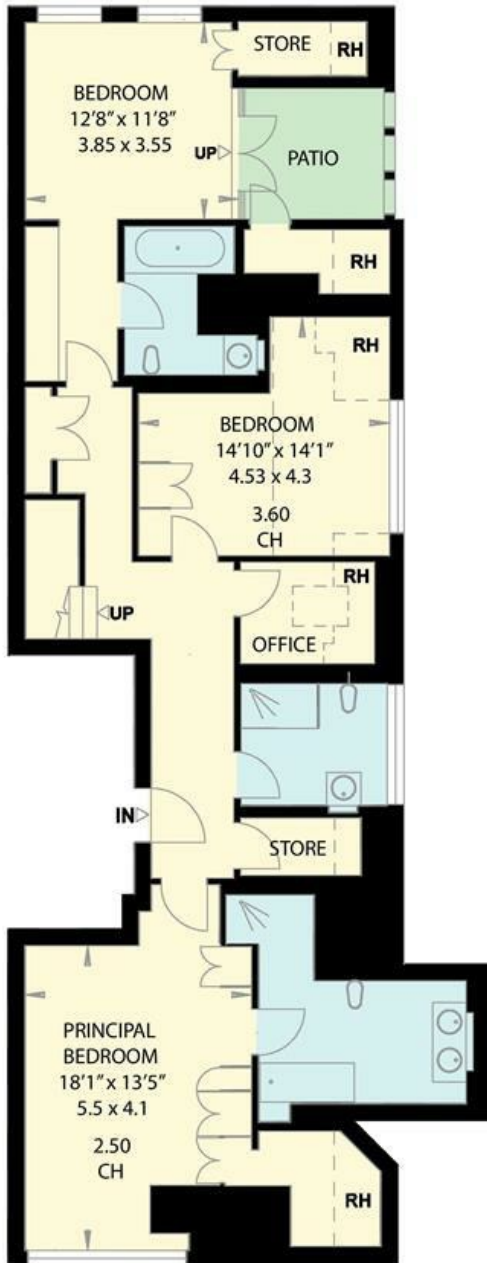




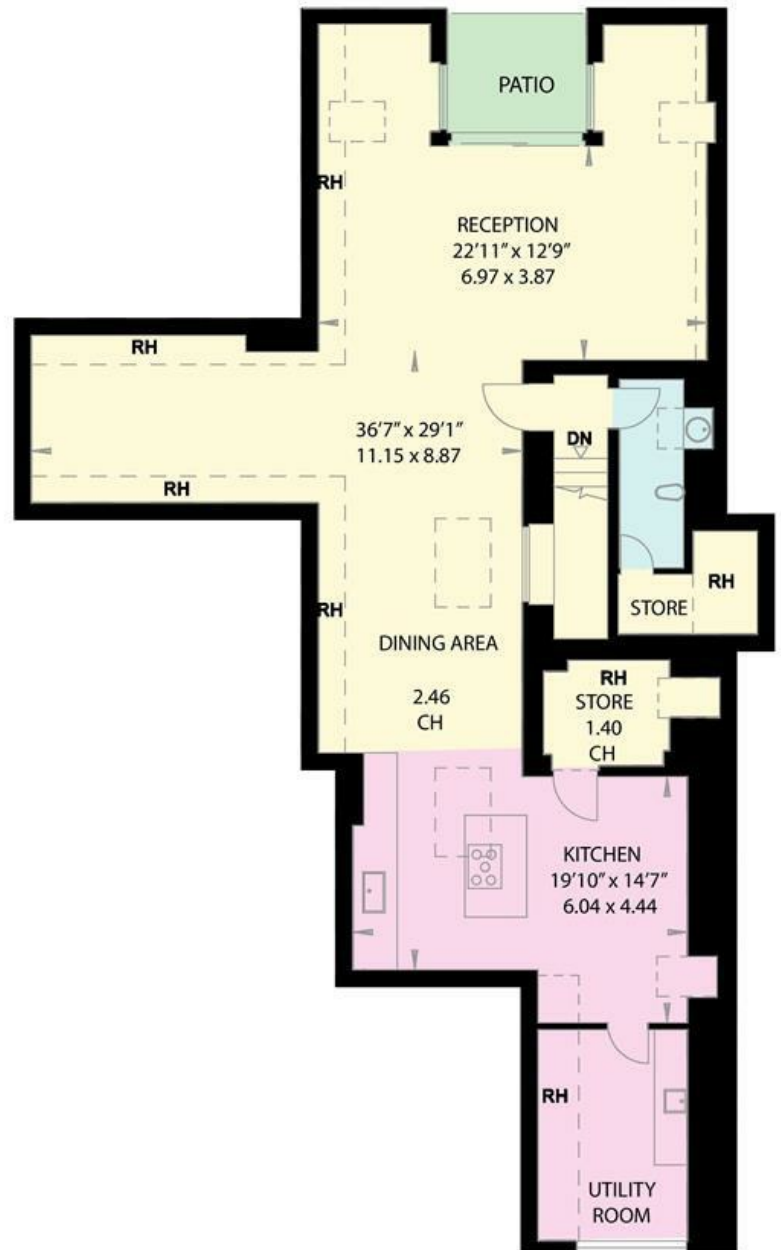
OTTO SCHIFF HOUSE  
NUTLEY TERRACE  
LONDON NW3

Gross Internal Area = 227.8 sq metres/ 2452 sq feet  
(Excluding Restricted Heights)

Gross Internal Area = 260.1 sq metres/ 2800 sq feet  
(Including Restricted Heights)



SECOND FLOOR



THIRD FLOOR